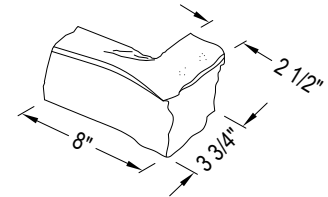
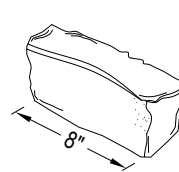
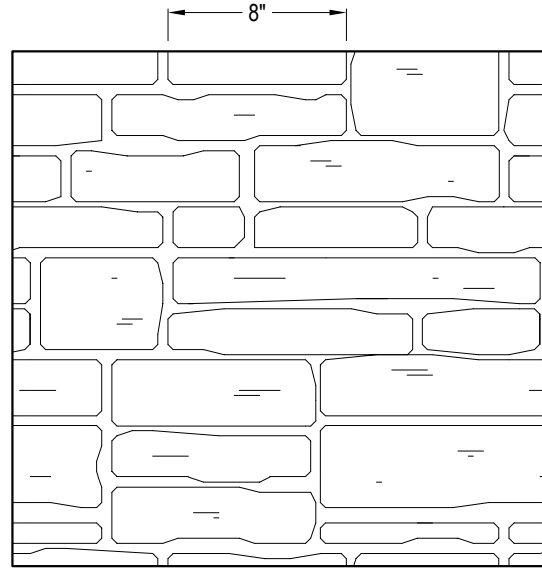
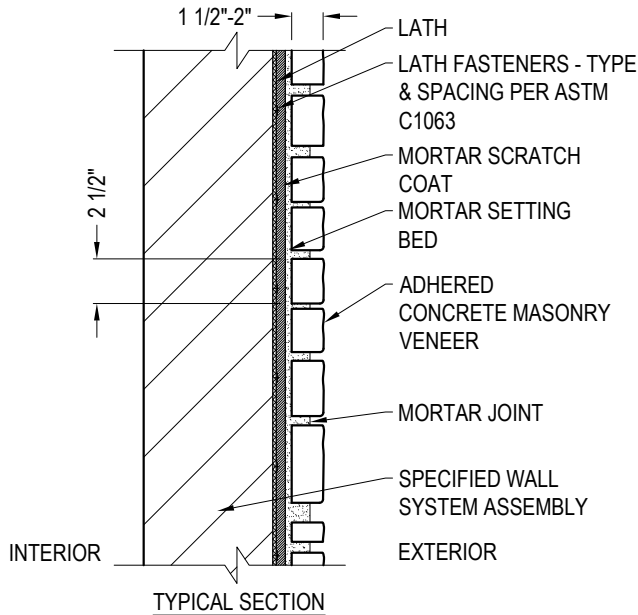




PRESTIGE STONE PRODUCTS  
 9290 WINESBURG RD.  
 DUNDEE, OH 44624  
 PHONE: (330) 439-5318  
 FAX: (330) 439-5319  
 www.prestigestoneproducts.com

SELECT DESIRED PROFILE/COLOR:

FARMHOUSE     REDWOOD     MAHOGANY



**SPECIFICATIONS:**

**MATERIALS:** COMBINATION OF PORTLAND CEMENT, LIGHTWEIGHT AGGREGATES, AND PERMANENT MINERAL OXIDE COLORS. PRODUCTS ARE MANUFACTURED IN MOLDS WHICH ARE PRODUCED FROM NATURAL STONE.

**COMPRESSIVE STRENGTH:** IN ACCORDANCE ASTM C39 - 6760 PSI

**ABSORPTION:** ASTM C1195 - 14.7%

**SPLIT TENSILE TEST:** ASTM C496 - 499 PSI

**FREEZE / THAW:** (C67) NO DISINTEGRATION AND LESS THAN 0.2% WEIGHT LOSS

**FIRE RATING:** ZERO FLAME SPREAD, ZERO SMOKE DEVELOPED, ZERO FUEL CONTRIBUTED

**COLOR RETENTION:** PERMANENT MINERAL OXIDE COLOR

**VENEER UNIT WEIGHT:** 10-12 LBS. INSTALLED

\* PRODUCTS WILL VARY IN SIZE AND SHAPE.

**NOTES:**

1. INSTALLATION TO BE COMPLETED IN ACCORDANCE WITH MANUFACTURER'S SPECIFICATIONS.
2. DO NOT SCALE DRAWING.
3. THIS DRAWING IS INTENDED FOR USE BY ARCHITECTS, ENGINEERS, CONTRACTORS, CONSULTANTS AND DESIGN PROFESSIONALS FOR PLANNING PURPOSES ONLY. THIS DRAWING MAY NOT BE USED FOR CONSTRUCTION.
4. ALL INFORMATION CONTAINED HEREIN WAS CURRENT AT THE TIME OF DEVELOPMENT BUT MUST BE REVIEWED AND APPROVED BY THE PRODUCT MANUFACTURER TO BE CONSIDERED ACCURATE.
5. CONTRACTOR'S NOTE: FOR PRODUCT AND COMPANY INFORMATION VISIT [www.CADdetails.com/info](http://www.CADdetails.com/info) AND ENTER REFERENCE NUMBER 5381-011.

